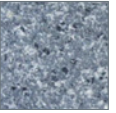
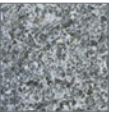




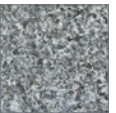
FINISHES



Honed



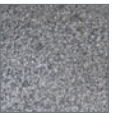
Flamed



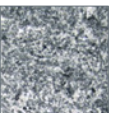
Burnished



Adze



Bushhammered



Splitface

A dark, steel grey background is flecked with equal parts of salt and pepper in this classically understated granite. The subtle tonal variations found within the full color range add interest and life to applications such as cobblestones and paving. The inherent strength and durability of this material make it an excellent choice for applications in high-traffic areas.

APPLICATIONS		SPECIFICATIONS	
<ul style="list-style-type: none"> <li>• Commercial Paving</li> <li>• Residential Paving</li> </ul>	<ul style="list-style-type: none"> <li>• Freeze Thaw Veneer</li> <li>• Freeze Thaw Paving</li> </ul>	Source: Non-domestic Color Range: Grey Std. Block Size: TBC	Std. Thickness: TBC Std. Lead Time: 10 – 14 weeks
<a href="http://www.maiden-stone.com/products/graphite_granite">www.maiden-stone.com/products/graphite_granite</a>			

*Stone is a natural product that varies in color, texture, and fossil activity (if applicable). All technical data is deemed to be correct but is not guaranteed and should be independently verified.*